

IMPORTANT PLEASE READ:

Please note, if you have found this document through a web search and not via the Complete Document Formatting website, it is not the Original Price List, it is an excerpt from the original price list created by Complete Document Formatting as an example for the [Portfolio Page](#). If you need more information regarding the contents of this document, please contact the manufacturer directly. Any pricing found in this document (even though there isn't any) is not binding.

Please visit www.completedocumentformatting.com.au for any other information.

Boilers	1
Ferroli Atmos	1
Ferroli Wall	1
Ferroli Pega	2
Ferroli Cas	3
Chappee C	4
Arizona Steel Fire Tube Boilers	5
Eurogen Condensing Boilers	5
Burners	6
Gas Burners	6
Enterprise Light Oil Burners	6
Expansion Tanks	7
Duraflex Expansion Tanks for Mechanical Services - Forté Series	7
Duraflex Expansion Tanks for Potable Water - Cobalt Series	7
Duraflex Expansion Tanks for Compact Boiler Applications	8
Duraflex Expansion Tanks for Potable Water - Calibre Series	8
Duraflex Variomat Expansion Systems	8
Zilmet Expansion Tanks for Mechanical Services - Cal-Pro Series	9
Zilmet Expansion Tanks for Compact Boilers	10
Zilmet Expansion Tanks for Potable Water	10
Zilmet Expansion Tanks - Stainless Steel	10
Zilmet Expansion Tanks Accessories	11
Backflow Prevention	12
Automatic Refill Units	12
Flowmatic Water Makeup Assembly	12
Flowmatic / Caleffi RPZ Backflow Prevention Only	12
Pumps	13
Salmson Pumps	13
Grundfos Circulator Pumps	14
Radiators	15
Brugman Radiators - K Series Single Convect	15
Brugman Radiators - KK Series Double Convect	17
Brugman Slimline Radiators PKS Series	19
Brugman Radiator Accessories	19
Floréal Cast Iron Classic Traditional Radiators	21
Savanne Cast Iron Column Radiators	21
Dune Cast Iron Column Radiators	21
Ferroli Fan Convectors	22

www.completdocumentformatting.com.au

Towel Rails	23
<i>Brugman Towel Rails</i>	23
<i>Chappee Towel Rails</i>	23
Radiator Valves	24
<i>Honeywell M.N.G. Radiator Valves</i>	24
<i>Caleffi Radiator Valves</i>	25
<i>Fan Coil Valves</i>	25
Room Thermostats	26
<i>Theben Room Thermostats</i>	26
Balancing Valves	27
<i>Honeywell M.N.G. Balancing Valves</i>	27
Heat Exchangers	28
<i>Zilmet Plate Heat Exchangers</i>	28
Accessories	29
<i>Air Release Valves</i>	29
<i>Bypass Valves</i>	29
<i>Dosing Pot</i>	29
<i>Filling Valves & Pressure Reducing Valves - Adjustable</i>	29
<i>Flow Switches</i>	29
<i>Gauges</i>	29
<i>Inhibitors</i>	30
<i>Mixing Valves</i>	30
<i>Pressure Relief Valves</i>	30
<i>Ball Valves, Boiler Drain Valves, Ball Valves with Check, DR Valves and Gauge Cocks</i>	31
<i>Unions, Fittings etc</i>	32
<i>Flue Draft Regulators</i>	33
<i>Armaflex Pipe Insulation</i>	33
Hydronic Piping Systems	34
<i>Hydronic Piping Manifolds and Pexal Pipe</i>	34
<i>Floor Coil Fittings</i>	34
Spare Parts	35
<i>Boiler/Burner Spare Parts</i>	35
<i>Boiler/Burner Spare Parts for Ferrol</i>	36
<i>Fibre Glass Products</i>	37
Radiant Heaters	38
<i>BlackHeat Radiant Heaters</i>	38
<i>SBM Radiant Heaters</i>	38
Specialist Heat Transfer Systems	39



F30EL



F2-51



Tempra - Indoor



Tempra - Outdoor

Ferrolti Atmospheric Cast Iron Indoor Electronic Ignition

AGA Approved Type A Appliance

Part No.	Model	Input MJ/hr	Output kW Natural Gas	Output kW LP Gas	Weight kg	Unit Price \$
F36EL	RENDIMAX 36EL	145	32.2	30.7	126	xxxx.00

PV Version with Zilmet Tank & Circulator

FPV23EL	RENDIMAX PV 23EL	92	20.4	19.3	94	xxxx.00
FPV30EL	RENDIMAX PV 30EL	120	26.3	25.00	112	xxxx.00

Atmospheric C.I. Boiler Electronic Ignition "On Off"

F251	PEGASUS F2-51	230	48	46	260	xxxx.00
F268	PEGASUS F2-68	306	64	61	305	xxxx.00
F285	PEGASUS F2-85	383	80	76	350	xxxx.00
F2102	PEGASUS F2-102	459	95	92	395	xxxx.00
F3119A	PEGASUS F3-119A	500	111	107	470	xxxx.00
F3136A	PEGASUS F3-136A	570	127	122	530	xxxx.00

Maximum working pressure 400kPa

Prices include 20mm 3 Bar safety valve

Insulated casing fitted

Accessories

F2VFR	TYPE A Boilers volt free run & fail					nett xxxx.00
PS77	TYPE A Boilers low water alarm pressure switch					nett xxxx.00

Ferrolti Wall Hung Boiler

Part No.	Model	Input MJ/hr	Output kW LP Gas	Weight kg	Unit Price \$
FT30NGO	Tempra 30 Natural Gas Outdoor	132	30	51	xxxx
FT30LPGO	Tempra 30 ULP Gas Outdoor	120	28	51	xxxx
FT30NGI	Tempra 30 Natural Gas Indoor	132	30	41	xxxx
FT30LPGI	Tempra 30 ULP Gas Indoor	120	28	41	xxxx

AGA Approved Type A Appliance

Tempra Flue System

Part No.	Model	Unit Price \$
FTHT56A	Horizontal Terminal 1m - 60/100	xxxx.90
FTVT19A	Vertical Terminal 60/100	xxxx.75
FTFE56V	Flue Extension 1m - 60/100	xxxx.90
FTRF82U	Tile Roof Flashing	xxxx.20
FTCB31W	Concentric Bend 45° M - F 60/100	xxxx.20
FTVF33K	Vertical Flange 60/100	xxxx.60
FTFB31Y	Flange Bend 90° 60/100	xxxx.40
FTFG11A	Flue Gasket Kit 60/100	xxxx.50



F3-119B

Ferrolti Pegasus F3 Cast Iron Boilers

Type B Appliance - Atmospheric Modulating Natural Gas Burner 1.1kPa

Part No.	Model	Input MJ/hr	Output kW Natural Gas	Weight kg	Unit Price \$ Indoor	Unit Price \$ Outdoor
F3119B	PEGASUS F3-119B	536	119	470	8780.00	xxxx.00
F3136B	PEGASUS F3-136B	612	136	530	9870.00	xxxx.00
F3153B	PEGASUS F3-153B	689	153	575	10850.00	xxxx.00
F3170B	PEGASUS F3-170B	765	170	625	11600.00	xxxx.00
F3187B	PEGASUS F3-187B	842	187	665	12250.00	xxxx.00
F3221B	PEGASUS F3-221B	995	221	760	13220.00	xxxx.00
F3255B	PEGASUS F3-255B	1148	255	875	14450.00	xxxx.00
F3289B	PEGASUS F3-289B	1300	289	945	15500.00	xxxx.00

Maximum working pressure 400kPa

Prices include 20mm 4 Bar safety valve

Insulated casing fitted

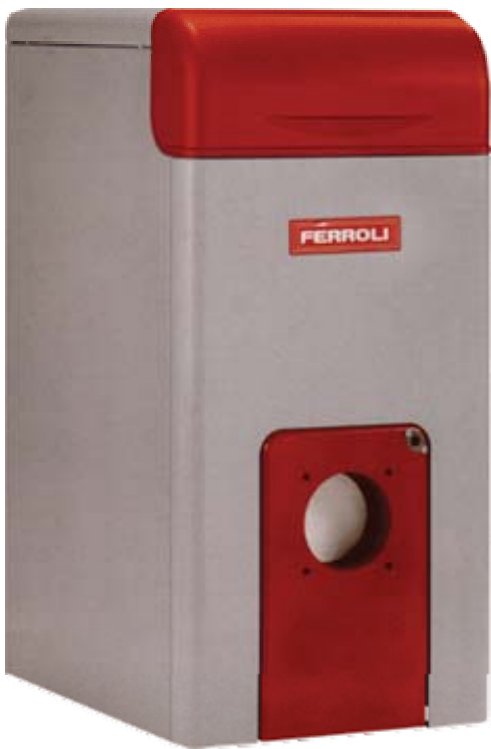
Type B Boiler Options

F3-VFC	Voltage Free Contacts <i>Run and Fail</i>	nett xxxx.00
F3-OCP	Outdoor Compensation Package	nett xxxx.00
F3-ROT	Pump Control & Run On Timer	nett xxxx.00
C626600	Flow Switch supplied loose (CALEFFI #626600)	xxxx.00
F3-COMM	Commissioning and Office Of Gas Safety Approval - in Melbourne Metro	nett xxxx.00

Gas Cows

Part No.	Description	Size (mm)	Unit Price \$
AB2115	Gas Flue Cowl - Galvanised	125	xxxx.20
AB2116	Gas Flue Cowl - Galvanised	150	xxxx.20
AB2117	Gas Flue Cowl - Galvanised	180	xxxx.60
AB2118	Gas Flue Cowl - Galvanised	200	xxxx.50
AB2119	Gas Flue Cowl - Galvanised	225	xxxx.10
AB2120	Gas Flue Cowl - Galvanised	250	xxxx.70
AB2121	Gas Flue Cowl - Galvanised	300	xxxx.50
AB2122	Gas Flue Cowl - Galvanised	350	xxxx.10
AB2123	Gas Flue Cowl - Galvanised	400	xxxx.60
AB2124	Gas Flue Cowl - Galvanised	450	xxxx.00
AB2125	Gas Flue Cowl - Galvanised	500	xxxx.00
AB2126	Gas Flue Cowl - Galvanised	550	xxxx.90
AB2127	Gas Flue Cowl - Galvanised	600	xxxx.50

Sizes 300mm to 600mm Made to Order



FGN1 Series



FGN2 Series



FGN4 Series

Ferrolli Cast Iron Sectional Boilers - for Gas or Oil Firing

GN1 Series - Assembled Without Burner

Part No.	Input MJ/hr	Output kW	Gas Burner	Weight kg	Unit Price \$
FGN1.02	104.85	23.3	GS04	75	xxxx.00
FGN1.03	141.30	31.4	GS04	100	xxxx.00
FGN1.04	209.25	46.5	GS08	125	xxxx.00
FGN1.05	261.45	58.1	GS08	155	xxxx.00
FGN1.06	314.10	69.8	GS12	175	xxxx.00
FGN1.07	366.30	81.4	GS12	200	xxxx.00
FGN1.08	418.50	93.0	GS12	225	xxxx.00

Maximum working pressure 400kPa
 Pressure Relief Valve Included
 Insulated Casing Fitted and Control Panel

GN2 Series - Assembled Without Burner

FGN2.05*	472.50	105	GS20	310	xxxx.00
FGN2.06	562.50	125	GS20	361	xxxx.00
FGN2.07*	652.50	145	GS20	412	xxxx.00
FGN2.08	742.50	165	GS20	463	xxxx.00
FGN2.09*	832.50	185	GS350C	514	xxxx.00
FGN2.10	922.50	205	GS350C	565	xxxx.00
FGN2.11*	1012.50	225	GS350C	616	xxxx.00
FGN2.12	1102.50	245	GS350C	670	xxxx.00
FGN2.13*	1192.50	265	GS400C	725	xxxx.00
FGN2.14	1282.50	285	GS400C	780	xxxx.00

Maximum working pressure 400kPa
 Pressure Relief Valve Included
 Insulated Casing Supplied for Site Fitting

GN4 Series - Unassembled Without Burner

FGN4.07*	900	200	GS350C	840	xxxx.00
FGN4.08	1125	250	GS350C	950	xxxx.00
FGN4.09*	1350	300	GS400C	1060	xxxx.00
FGN4.10	1620	360	GS550C	1170	xxxx.00
FGN4.11*	1890	420	GS550C	1280	xxxx.00
FGN4.12	2160	480	GS60	1390	xxxx.00
FGN4.13*	2520	560	GS60	1500	xxxx.00
FGN4.14	2925	650	GS65	1610	xxxx.00

Maximum working pressure 400kPa
 Pressure Relief Valve Included
 Insulated Casing Supplied for Site Fitting

* Not normal stock item. Available on request



XR4 Series

Chappee Cast Iron Sectional Boiler

Chappee Cast Iron Boilers

NXR3 Series Assembled Without Burner

Part No.	Output kW	Shipping Weight kg	Gas Burner Model	Unit Price \$
CHNXR34	90	610	GS20	xxxx.00
CHNXR35	130	721	GS20	xxxx.00
CHNXR36	170	838	GS20	xxxx.00
CHNXR37	210	949	GS350C	xxxx.00
CHNXR38	250	1061	GS350C	xxxx.00
CHNXR39	290	1179	GS400C	xxxx.00

XR4 Series - Unassembled Without Burner

Part No.	Output kW	Shipping Weight kg	Gas Burner Model	Unit Price \$
CHXR409	410	1590	GS550C	xxxx.00
CHXR410	470	1745	GS60	xxxx.00
CHXR411	530	1885	GS60	xxxx.00
CHXR412	595	2030	GS60	xxxx.00
CHXR413	650	2200	GS65	xxxx.00
CHXR414	715	2315	GS65	xxxx.00
CHXR415	775	2450	GS72	xxxx.00
CHXR416	835	2585	GS72	xxxx.00
CHXR417	895	2725	GS72	xxxx.00

Maximum working pressure 800kPa

Pressure Relief Valve Included

Insulated Casing Supplied for Site Fitting

XP3 Series - Assembled for Solid Fuel

Part No.	Output kW	Shipping Weight kg	Unit Price \$
CHXP30-6	23	228	xxxx.00
CHXP30-7	28	262	xxxx.00
CHXP30-8	32	292	xxxx.00
CHXP30-9	37	326	xxxx.00

Maximum working pressure 400kPa